

SERIES 600

MIXED LIQUOR SUSPENDED SOLIDS SENSOR

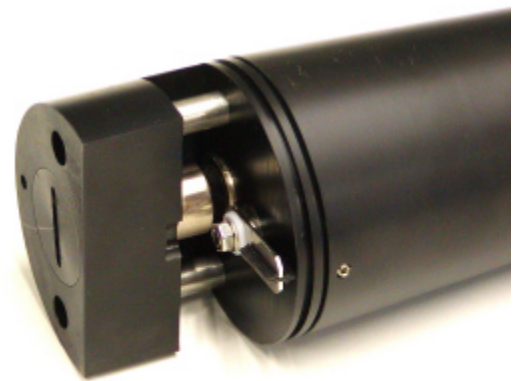


- **180° Forward Scatter modulated infra red sensor**
- **Unaffected by ambient light**
- **Auto Clean as standard**
- **0-10,000 or 0-20,000 mg/l**
- **Solid Secondary standard for ease of calibration**
- **Dip or Flow line versions**

Description

The pHOENIX Series 600 mixed liquor suspended solids sensor is an optically based system designed to operate with the C90 and Series 1000 in a number of applications. There are two versions of the sensor, one which covers the range 0-10,000 mg/l for use primarily in activated sludge plants and another version measures up to 20,000 mg/l for sludge dewatering applications.

Both versions of the 600 employ a modulated infra red light source with auto light balance and ambient light rejection. All sensors operate in the 180° degree forward scatter mode with differing path lengths depending upon the range of measurement. Automatic cleaning is a standard feature on the Series 600 based on a double wiper system which can be enhanced by a compressed air and water jet system as an option. All cleaning operations are controlled from the instrument and readings are 'frozen' during any cleaning cycle.



Detection assembly with auto clean 'double wiper' system

Specification

Operating Voltage:	12 Volts D.C.
Supply current:	50mA nominal
Signal Span:	+/- 3000 mV
Packaging:	IP68
Detection Sensitivity:	Better than 0.01g/l
Cleaning:	Automatic as standard
Range:	Standard 0-10g/l with 0-20g/l option
Display Resolution:	0.01 g/l (below 100 mg/l)
Accuracy:	0.1g/l or +/- 5% of reading whichever is greatest
Light Source:	Modulated LED
Calibration Interval:	Better than 6 months
Calibration:	Solid reference standard
Mounting:	Dip Type - Up to 3 metre stainless steel pole Flow line subject to application
Cable:	Heavy duty polyurethane jacketed multi-strand
Cable length:	Up to 100 metres.

Secondary Standard

For ease of calibration and occasional checking of the sensor accuracy, pHOENIX provide a solid secondary standard which eliminates the need for liquid samples.

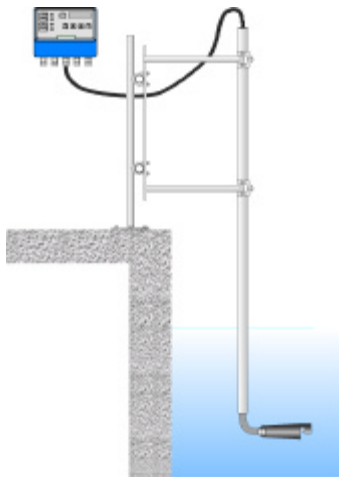


Solid standard in case



Solid standard

Installation



Instrumentation



Features

- Auto cal by secondary standard
- Sensor diagnostics
- 4-20mA output
- AC or DC operation
- Alarm or control relays

Accessories

The Series 600 is available in either dip or flow line configuration with a variety of accessory options e.g. mounting pole, brackets, pipe line adapters etc.